



Change the way you see the solar light

All in Two

SOLAR STREET LIGHTS

30~120Watt



Auroras Profile

Auroras is an innovative manufacturer accredited by ISO9001, ISO14001, ISO45001, and BSCI management and quality system etc. Auroras is dedicated and positioned to supply unique aesthetic, durable quality solar lights for the commercial market and high-end distribution markets. Since established in 2013, Auroras has been investing a lot of cost per year on new products development. Auroras is the pioneer in the solar lighting industry and leading the market trend in product design concepts and quality standards.



- In 2016, Auroras is the first company who released HELIOS all-in-two solar street lights in the world and successfully won the contract of UNHCR for 3 years.
- In 2017, Auroras is the first company that released all-in-one solar batten light in the world and defined what is solar led batten light in google search
- In 2018, Auroras released the THOR all-in-two solar street light who build in the biggest battery 2160WH in the world.
- In 2019, Based on future vision & forecast, , Auroras released the vertical solar street light system which is a the revolutionary design of solar lighting market.

In the same year, auroras won the contract from 43 competitors to supply vertical solar street light to 2019 Southeast Asian Games .

- In 2020, Auroras released the Athena solar pedestrian light which exceeded the quality and design expectations of customers for solar light. It gains lots of ultra-high praise.
- In 2021, Auroras won the project to supply solar lights to DUBAI EXPO 2020

Quality Quality

Auroras is aware of the importance of the quality position since the first day when established. Different from the very regular products on market, All auroras' products are developed with a distinct aesthetic look and durable components with high specification performance. Quality is positioned on premium quality which is able to satisfy professional clients.

Marketing Philosophy

Establishing strong & long-term relationships with clients as partners in the pursuit. Auroras is aimed to build a network of agents & distributors globally. Auroras has the strict principle whose purpose is to protect customers' rights and benefits. It takes a long time and lots of effort to promote new products to market which is performed on the basis of customers' trust in Auroras.



مجلس أبوظبي للجودة والمطابقة
ABU DHABI QUALITY AND CONFORMITY COUNCIL



Products Certificates

Auroras Innotech is certified by ISO9001, ISO14001, ISO45001 and accredited by BSCI. Products are certified by CE, ROHS, CB, IECEE, LM79, LM80, TM21 , and IK tests etc. Auroras products obtain most of the certificates to meet the demand of high-end projects.

ADQCC Approval

Abu Dhabi Quality and Conformity Council has launched the Trustmark (AbuDhabi Trustmark) which indicates product's compliance with safety, environmental and performance standards, in addition to administrative and production systems compliance with the conformity Program. In 2022 April, Auroras's products are finally approved by ADQCC and authorized with AD mark.

Auroras
Products+



INTEGRATED SOLAR STREET LIGHTS 30~120Watt

- * **INTEGRATED DESIGN**
- * **BIG BATTERY CAPACITY**
- * **CONTINUES HIGH POWER**
- * **LONG LIFETIME**

All in Two solar street light series are dedicated to provide the real and continuous high brightness output for high-end project. Difference from all in one solar street light, solar panel of all in two is separated from solar light head and two parts are connected to each other directly by universal MC4 connectors directly. Big LifePO4 battery pack with 2-3 days autonomy and MPPT charge controller are built inside of light fixture. Three models are available as HELIOS for 20W 30W and 50W, HERMES is for 60W and 80W, THOR is for 100W and 120W. All the specification can be customized according to client's requests.



Profile + Feature

As the pioneer of all in two solar street lights on the market. Auroras has got a high reputation from clients over last years on quality and service. These 3 models are the popular models for commercial lighting because of its lighting performance and quality.

All in two solar led street light is an innovative structure of solar led street light developed since 2016. It adopts the concept of all in one solar led street lights in order to reduce the complication of installation but also maintain the stability and flexibility of regular solar-led street lights whose components are individual.

Additionally, an advanced wireless intelligent control system is available which makes the solar street lights could be monitored and settable online freely. The state of the solar light system could be recorded in the system and all states including the voltage of the battery, solar panel, and led light power is visible at the online control platform. Customers can modify the lighting power and its lighting programs easily as required. An automatic problem alarm is also available which reduces of step and cost of maintenance work a lot.



LED Source

It adopts ultra high brightness of Philips lumileds SMD5050 as light source. Each led chip can be driven to 5W max. With 64pcs of 5050 leds driven by low current, it achieve to more than 150lm per watt. Meanwell it output less heat which will extend the lifetime of LED chip greatly.

Lithium Battery Pack

Supber long lifetime LifePO4 battery are adopted for all model of solar street light. Produced with high requirements of management and production by ISO9001 certified factory, lifePO4 battery is able to provide continues and stable power to system for many years without maintainence.

Charge Controller

As the CPU of solar led light, high efficiency MPPT solar charge controller are adopted for all lights, With high quality and high efficiency solar charge controller, it can guarantee sufficient power can be generated with limited solar radiation condition.

MC4 Connection

Solar light head is to be connected to solar panel with MC4 connectors. it make the installation simple and durable. Seperated solar panel can be freely adjusted as needed. Customer can select a suitable power of solar panel depending on their local solar radiation at will.

Design Aesthetics

It adopted streamlined design concept with better wind resistant performance and appearance. Designed specially for premium quality projects requests.

Green Energy

100% pure energy from sun. No bill for electricity anymore. No pollution. Endless power from nature.

High Luminous Output

Adopted 64pcs of led chips philips SMD5050 as light source ,driven by less rated input current, It reaches high lumens luminous output up to 160lm/watt.

Programmable

Smart MPPT solar controller built-in, Even after the products are installed, the lighting scheme can be reconfigured or adjusted



Helios



Hermes



Thor

Long Lifetime

Using superb quality battery with long lifetime. deep cycles. Working well in low and high temperatures at -20 C ~+65 C . Maintenance free for years without extra cost.

Quality lithium battery with long lifetime and mppt solar controller are built inside of light, Only need to be connected to solar panel via MC4 connectors and turn on

Compact Sturcture

The pioneer model on market based on "PLUG and PLAY" idea. Patents in utility & appearance registered

Patented Design

Long Autonomy

Up to 12 hours solar light head can work with 100% power continuously. Using energy saving modes, Autonomy can reach to 3~4 days max without charging.

Specification

| Item number | HELIOS-T3 | HELIOS-T5 | HERMES-T6 | HERMES-T8 | THOR-T10 | THOR-T12 |
|-------------------------|---|-------------|------------------------|-------------|------------------------|--------------|
| Luminous Flux | 4,800lm | 6,800lm | 8,800lm | 12,800lm | 14,800lm | 16,800lm |
| Rated Power | 30W | 50W | 60W | 80W | 100W | 120W |
| CRI | >79 | | | | | |
| LED Type | Lumileds SMD3030 72pcs | | Lumileds SMD5050 64pcs | | Lumileds SMD5050 64pcs | |
| CCT Range | 3000K / 4000K / 5000K / 6000K | | | | | |
| Beam Angle | Type I / II / III / III optics optional from LEDil | | | | | |
| Battery Capacity | 307WH 12.8V | 460WH 12.8V | 538WH 12.8V | 768WH 25.6V | 921WH 25.6V | 1075WH 25.6V |
| Battery Type | Brand new LifePO4 32700 6000mA 3.2V | | | | | |
| Battery Lifetime | D.O.D 50% 4000 cycles | | | | | |
| Charge Time | 4 hours | | | | | |
| Discharge Time | >24 hours | | | | | |
| Advanced Control System | Hybrid type Solar + 220V backup / Zigbee 2G/4G Wireless Control | | | | | |
| Regular Solar Panel | 80W 18V | 100W 18V | 120W 36V | 160W 36V | 200W 36V | 260W 36V |
| Vertical Solar Module | 140W 18V | 280W 36V | 340W 36V | 400W 36V | 540W 36V | 600W 36V |
| Cable & Connector | 2.5mm 0.6 meters with MC4 connectors | | | | | |
| Working Temp. | -20 °C ~ 75 °C | | | | | |
| Control Method | Automatic dusk to dawn / Time Control / Manual ON-OFF | | | | | |
| Default Lighting modes | 6 hours 100% + 6 hours 50%, 12 hours operation | | | | | |
| Fixture Size | 678*276*102mm | | | | | |
| Fixture materials | Aluminium Die Casting | | | | | |
| Fixture color | Gray RAL7005 | | | | | |
| N.W/Light | 9.60kg | 10.60kg | 14.30kg | 15.40kg | 13.50kg | 19.60kg |
| G.W/Light | 10.30kg | 11.20kg | 15.30kg | 16.40kg | 20.40kg | 21.80kg |
| IP Rate | IP67 | | | | | |
| Warranty | 3 years | | | | | |
| Certificates | CB CE ROHS IP67 LM79 LM80 FCC | | | | | |

MPPT Charge Controller



| | | | | |
|-------------------------------------|-----------------------|----------------------|-------------------|-------------------|
| Model number | MES60 (for T3 & T5) | DM80 (for T6 & T8) | DM120 (for T10) | DM160 (for T12) |
| System voltage | 12V | 12V | 24V | 24V |
| Output current range | 50~3000mA | 50~5600mA | 50mA~4200mA | 50mA~5600mA |
| Max. power of regular solar panel | 130W/18V | 200W/18V | 260W/36V | 400W/36W |
| Max. power of vertical solar module | 400W/18V | 500W/18V | 600W/18V | 800W/18V |
| MPPT tracking efficiency | 98% | | | |
| Load output voltage | <60V | <35V | <60V | <60V |
| Max load power | 60W | 80W | 120W | 160W |
| Overcharge voltage | 14.6V | 14.6V | 29.2V | 29.2V |
| Overcharge recovery voltage | 13.5V | 13.5V | 27V | 27V |
| Over-discharge voltage | 11.0V | 11.0V | 22.0V | 22.0V |
| Over-discharge recovery voltage | 12.4V | 12.4V | 24.8V | 24.8V |
| Light control voltage | 7V | | | |
| Operating temperature | -35 °C ~ 65 °C | | | |
| Net weight | 380g | 400g | 400g | 510g |
| Dimension(mm) | 80*82*22.6mm | 114*88.3*24.5mm | 114*88.3*24.5mm | 155*114.4*34mm |
| IP rate | IP68 | | | |
| Warranty | 3 Years | | | |

Quality LifePO4 Lithium Battery

Main Features

- Lithium Iron Phosphate (LiFePO4) Battery
- Safest lithium chemistry with high energy density
- Built-in automatic protections
- Efficient & long-lasting up to 4000+ cycles DOD 50%
- >2000 cycles @0.2C, Charge/Discharge at 100% DOD Internal cell balancing
- Wide temperature range: -20°C ~ 70°C
- Maintenance free after installation
- Cost effective

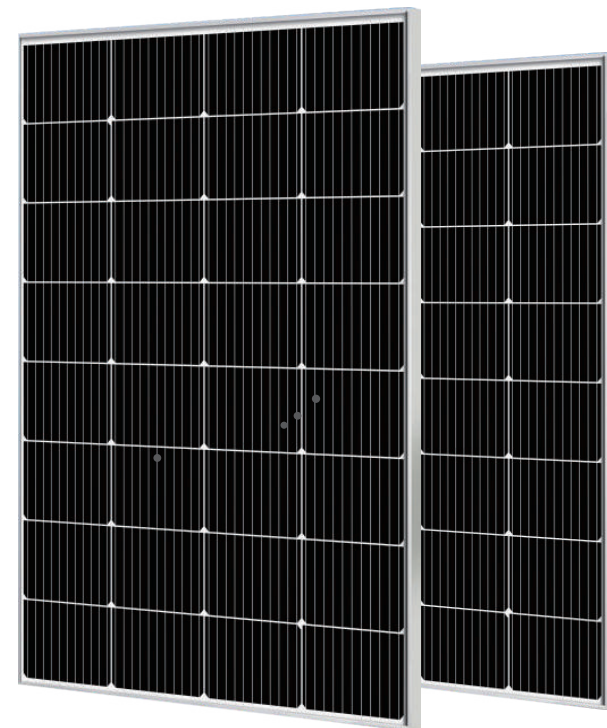


| | | | | | | |
|---------------------------|---------------------------|--------------------|--------------------|--------------------|--------------------|---------------------|
| Battery Spec | 12V-24AH | 12V-36AH | 12V-42AH | 24V-36AH | 24V-42AH | 12V-24AH |
| Battery cell type | LifePO4 6000mA 3.2V 32700 | | | | | |
| Nominal Capacity | 12.8V 24AH (307WH) | 12.8V 36AH (460WH) | 12.8V 42AH (768WH) | 25.6V 30AH (768WH) | 25.6V 36AH (921WH) | 25.6V 42AH (1075WH) |
| Quantity per pack | 16 pieces | 24 pieces | 28 pieces | 40 pieces | 48 pieces | 56 pieces |
| Array Mode | 4P4S | 6P4S | 7P4S | 5P8S | 6P8S | 7P8S |
| Dimension (L*W*H) | 140*240*75mm | 210*240*75mm | 210*240*75mm | 210*240*75mm | 210*240*75mm | 210*240*75mm |
| Charge mode | C.C + C.V | | | | | |
| Charge Cut-off voltage | 14.6±0.05V | 14.6±0.05V | 29.2±0.05V | 29.2±0.05V | 29.2±0.05V | 29.2±0.05V |
| Discharge Cut-off Voltage | 11±0.05V | 11±0.05V | 22±0.05V | 22±0.05V | 22±0.05V | 22±0.05V |
| Storage Temperature | +5 °C ~ +35 °C | | | | | |
| Operating Temperature | -25 °C ~ 65 °C | | | | | |
| Lifetime (D.O.D. 50%) | 4,000 cycles D.O.D 50% | | | | | |
| Warranty | 3 Years | | | | | |

Monocrystalline Solar Panel

Certifications

- IEC61215, IEC61730 •
- ISO9001:2015 Quality Management Systems •
- ISO45001 : Enbvironmental Management Systems •
- ISO45001:2018 Occupational Health and Safety Management System •



STC : Light intensity 1000W/ m² Battery temperature : 25 C Atmosphere quality = 15

NOCT : Light intensity 800W/ m² Battery temperature : 20 C Atmosphere quality = 15 Wind velocity 1m/s

| Model number | MSD-080W | MSD-100W | MSD-120W | MSD-160W | MSD-240W | MSD-300W |
|------------------------------------|---|--------------|--------------|---------------|---------------|----------------|
| Peak power / Pm(W) | 18.0V | 18.0V | 18.0V | 18.0V | 36.0V | 36.0V |
| Max. power voltage / Vmp(V) | 6.67A | 6.67A | 6.67A | 8.89A | 6.67A | 8.34A |
| Solar cells efficiency | 22.3% | 21.3% | 21.3% | 21.3% | 21.3% | 22.3% |
| Dimensions(L*W*T) | 550*760*30mm | 680*760*30mm | 800*760*30mm | 1040*760*30mm | 1530*760*30mm | 1290*1134*35mm |
| Grade of solar cells | A grade | | | | | |
| Cable & connector | 0.9M solar cable + MC4 connectors | | | | | |
| Operating temperature range | -40 °C ~ 85 °C | | | | | |
| Power output warranty: | IP65 | | | | | |
| IP rate | 10 years > 90%, 25 years > 80% | | | | | |
| Product Certifications / Standards | CE, ROHS ISO9001:2008, RoHSCE, IEC61215 | | | | | |

Zigbee System



Gateway (4G Sim Card inside)



Zigbee Module + Solar Controller

The zigbee control system is an integrated smart control system, the light control module is composed of two parts as solar controller and the signal module, These two parts are connected via the RS485 interface as the light control part. It communicates with the gateway with the Zigbee signal.

Comparison of Zigbee & 2G

Zigbee:

The bottom layer uses free wireless frequency communication, and the bottom layer data is transmitted to the Internet through a centralized gateway, so that one gateway can manage multiple street lights.

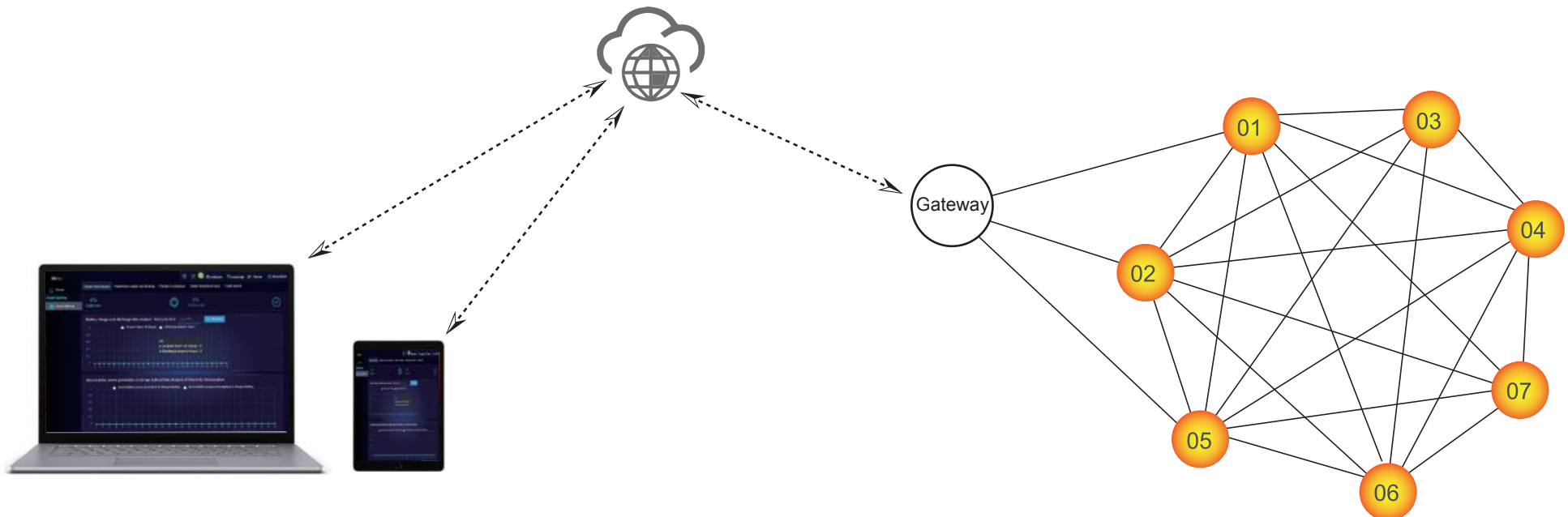
Advantages: when mass street lamps are used, the communication fee is relatively low.

2G/4G/GPRS/NB-IOT

The direct connection scheme is adopted, and there is no centralized manager, and the signal transmission is carried out through the base station of the mobile operator.

Advantages: The signal reliability and safety are relatively high, the construction is relatively simple, and there is no need to install a concentrator.

Disadvantages: The communication module and communication fees are relatively high.



More information, please refer to the Zigbee system datasheet of



EXPO
2020
DUBAI
UAE

SolarWrap

VERTICAL SOLAR POLE

Showcasing real solutions to the world's biggest challenges.

Designed by Mr.Auroras, the vertical solar lighting pole is a great innovation for outdoor lighting. It is a revolutionary design with an aesthetic appearance and high stability of lighting performance. The concept of vertical solar lighting pole is delivered to every corner of the world globally with the impact of Expo Dubai.





THE ONLY QUALITY Governments Trust

As the most classic model of solar led street light, HERMES is accredited by government customers in many countries.

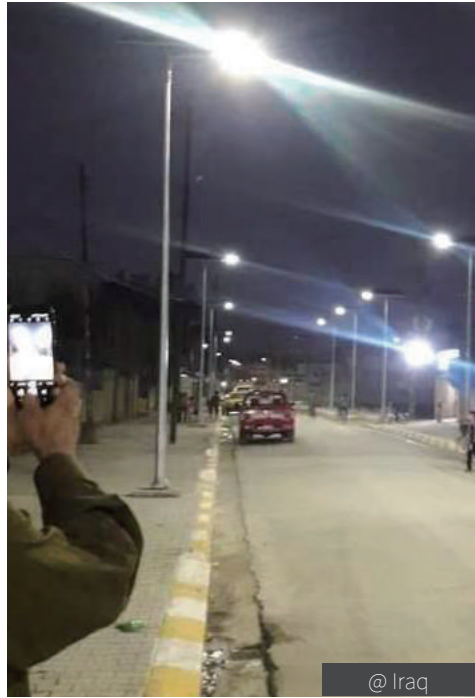
In Oct 2021, The Chinese Consulate General donates auroras's solar lights to the Iraq government in Erbil. 270 complete sets of Hermes solar street lights 80W are installed on the main road of Erbil city to light up the nights.



Erbil city Iraq



@ Sri Lanka



@ Iraq



@ Syria



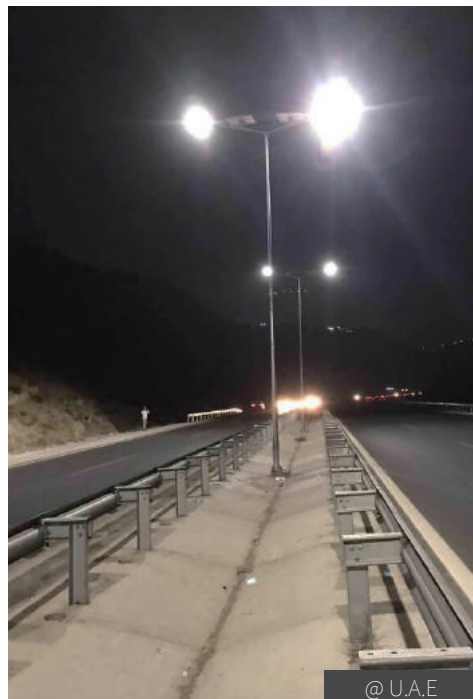
@ Syria



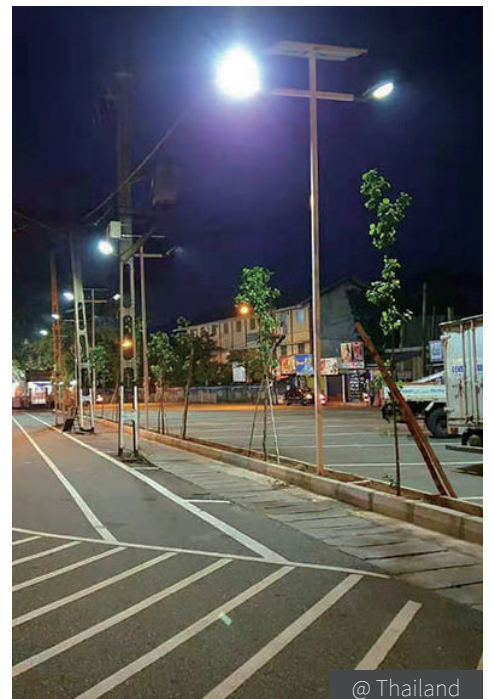
@ Philippines



@ Colombia



@ U.A.E



@ Thailand



Technical Collaboration with Truelite USA & MR.AURORAS China

AURORAS INNOTECH (GUANGDONG) CO., LTD

www.truelite.us www.auroraslighting.com
Telephone : +86 0756-8530887
Whatsapp-Wechat: +86 137 5117 1339
Email : Sales08@auroraslighting.com
Address : 2/F, B# Bldg, 1# Dongcheng Rd, SanXiang,
GuangDong Post Code 528463 CHINA